

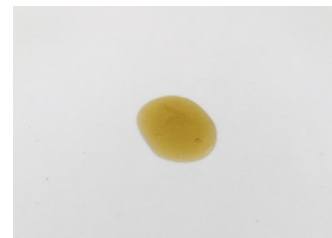
CERTIFICATE OF ANALYSIS No.: 2022-8111

CLIENT

KANNABIO HEMP HELLAS, SKOUFA 110
38334 VOLOS, Greece

SAMPLE *

mood refresh & restore



Sample condition: SUITABLE
Sample ID: 2210045
Sample type: Viscous liquid
Batch No.: * 28101221

Work order: 2022-106276
Analysis ID: 2022_057
Method ID: PHL_RPC_12C
Method SOP: MET-002-03

Sample received: 09/03/2022
Start of analysis: 10/03/2022
End of analysis: 11/03/2022
Analyst: Janez Gerdenc

* Information provided by the client.

CANNABINOID PROFILE	Concentration [% w/w]	Expanded uncertainty [% w/w]	Graphic presentation of relative cannabinoid concentration
CBDV - Cannabidivarin	0.068	0.016	
CBDA - Cannabidiolic acid	< LOQ	n/a	
CBGA - Cannabigerolic acid	< LOQ	n/a	
CBG - Cannabigerol	0.064	0.019	
CBD - Cannabidiol	6.40	0.32	
THCV - Tetrahydrocannabivarin	< LOQ	n/a	
CBN - Cannabinol	0.0301	0.0066	
CBC - Cannabichromene	0.125	0.021	
THC - Δ-9-Tetrahydrocannabinol	0.183	0.031	
THCA - Δ-9-Tetrahydrocannabinolic acid	< LOQ	n/a	
8-THC - Δ-8-Tetrahydrocannabinol	< LOQ #	n/a	
CBL - Cannabicyclol	< LOQ #	n/a	

Units and abbreviations: % w/w = weight percent, < LOQ = below the limit of quantitation (0.03 % w/w), ND = not detected, n/a = not available.

The results given herein apply only to the sample as received. **Expanded Uncertainty** was calculated using coverage factor $k = 2$, corresponding to a double standard uncertainty and characterizes the interval value in which it is possible to expect the real value with a probability of 95%. This is stated according to the ISO/IEC Guide 98-3.

Total or partial reproduction of this document is not allowed without the permit from PharmaHemp d.o.o. The document does not substitute any other legal document.

Date issued:

11/03/2022

Approved by:

mag. Marko Dragan

Analytical Laboratory Manager

Authorized by:

dr. Boštjan Jančar

Chief Technology Officer

End of Certificate